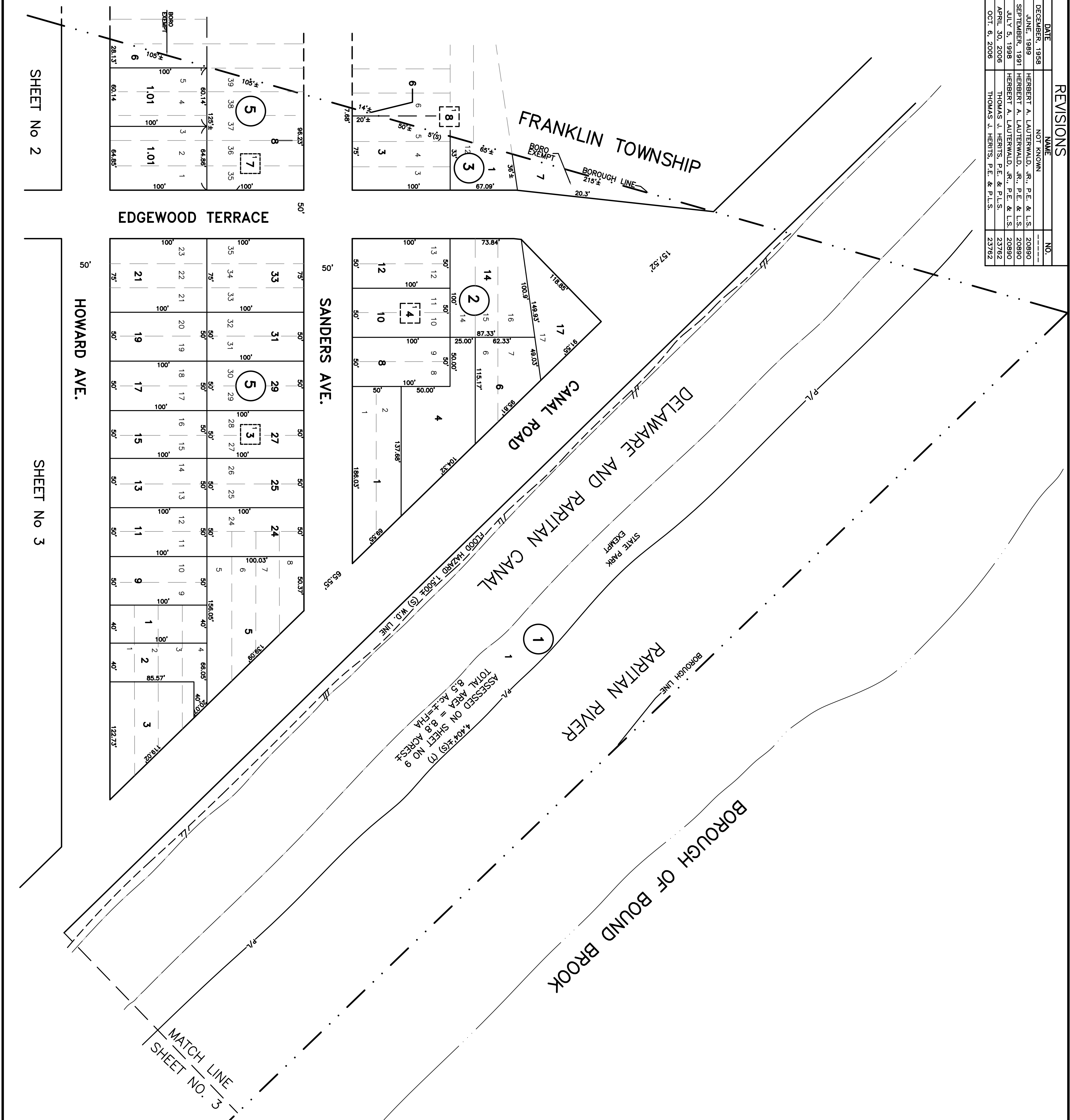
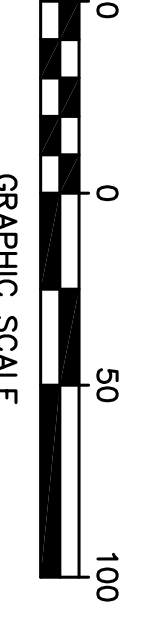
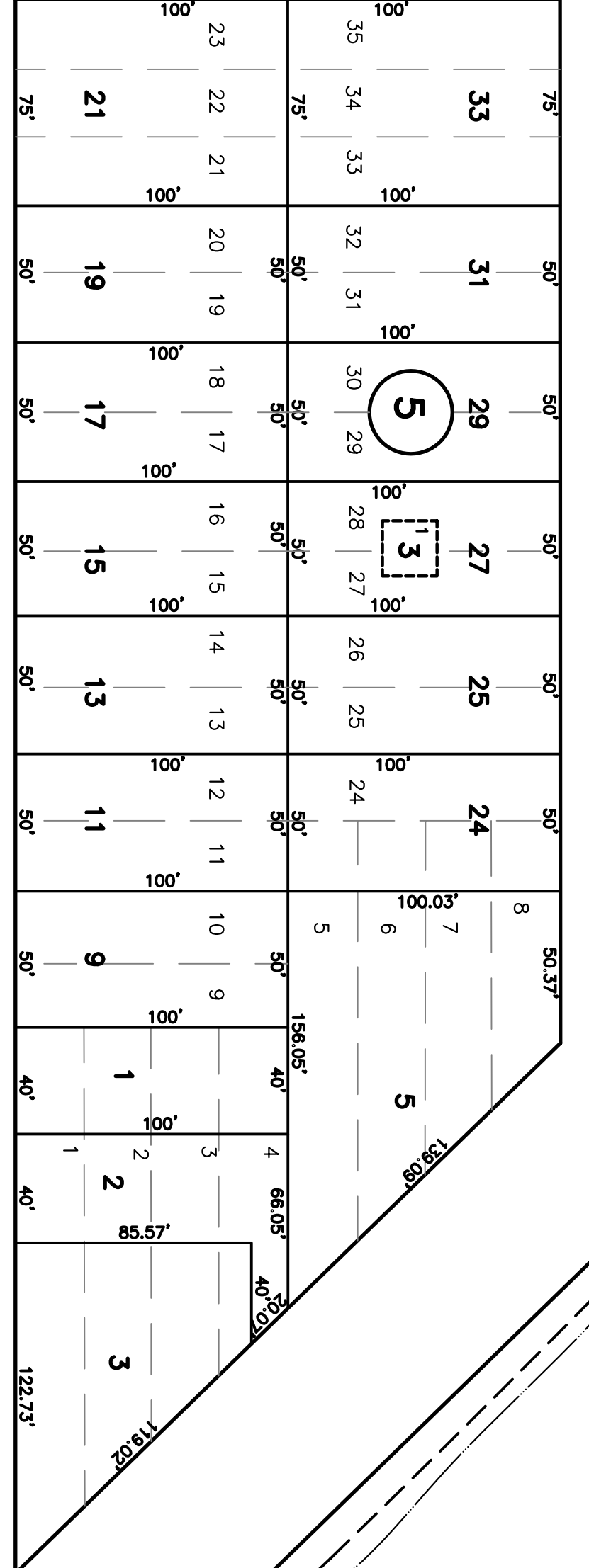


DATE	NAME	NO.
DECEMBER, 1938	NOT KNOWN	
JUNE, 1989	HERBERT A. LAUTERWALD, JR., P.E. & L.S.	20890
SEPTEMBER, 1991	HERBERT A. LAUTERWALD, JR., P.E. & L.S.	20890
JULY 5, 1998	HERBERT A. LAUTERWALD, JR., P.E. & L.S.	20890
APRIL 30, 2006	THOMAS J. HERITS, P.E. & P.L.S.	23762
OCT. 6, 2006	THOMAS J. HERITS, P.E. & P.L.S.	23762

REVISIONS



4,407.4(S) (7)
 ASSESSED ON SHEET NO. 9
 TOTAL AREA = 8.88 ACRES ±
 8.5 AC. ± = 77.4

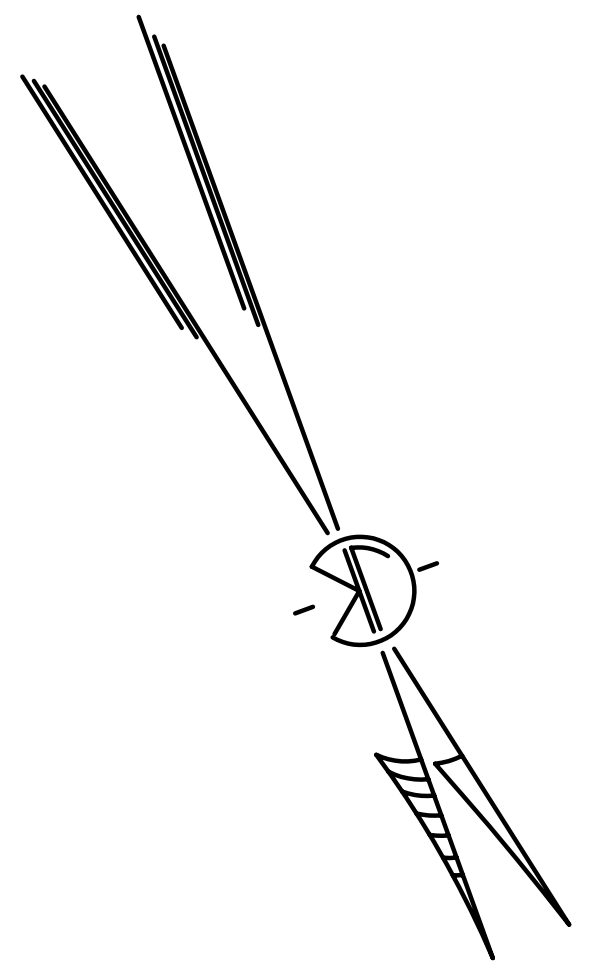


GRAPHIC SCALE

THIS TAX MAP SHEET IS A
 SCANNED COPY OF
 THE MAP PREPARED BY
 BY C.J. KUPPER, C.E.,
 DATED 1946 AND REVISED
 THROUGH JULY 1998.
 THE ORIGINAL TRACINGS
 ARE FILED IN
 THE ENGINEERS'
 OFFICE.

NEW JERSEY DEPARTMENT OF
 TAXATION AND FINANCE
 APPROVED AS A TAX MAP PURSUANT TO THE
 PROVISIONS OF CHAPTER 175, LAWS OF
 1913, ETC.
 FRANK E. WALSH
 DIRECTOR, DIVISION OF TAXATION
 BY THOMAS L. FRYER
 CHIEF ENGINEER AND SUPERVISOR
 DATE: SEPT. 4, 1946 SERIAL NO.: 115

TAX MAP
BOROUGH OF
SOUTH BOUND BROOK
 SOMERSET COUNTY, NEW JERSEY
 SCALE 1"=50'
C.J. KUPPER, C.E.
 1946
 TO SHOW CONDITIONS AS OF APRIL 2006



SHEET No 2

SHEET No 3

EDGEWOOD TERRACE

HOWARD AVE.

SANDERS AVE.

FRANKLIN TOWNSHIP

DELAWARE AND RARITAN CANAL

RARITAN RIVER

BOROUGH OF BOUND BROOK

1- MAPLETON PARK

MATCH LINE
 SHEET NO. 5