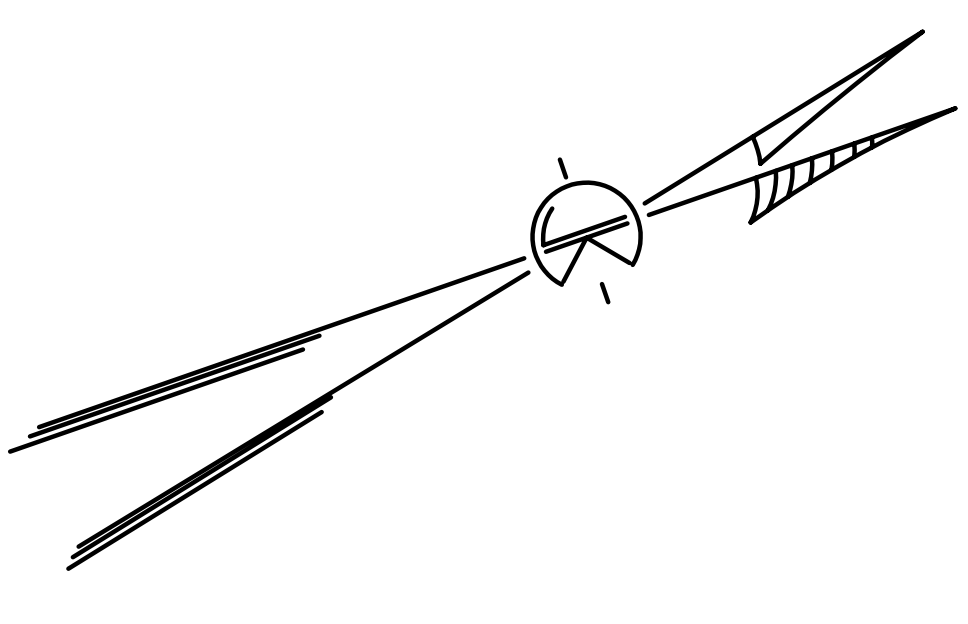
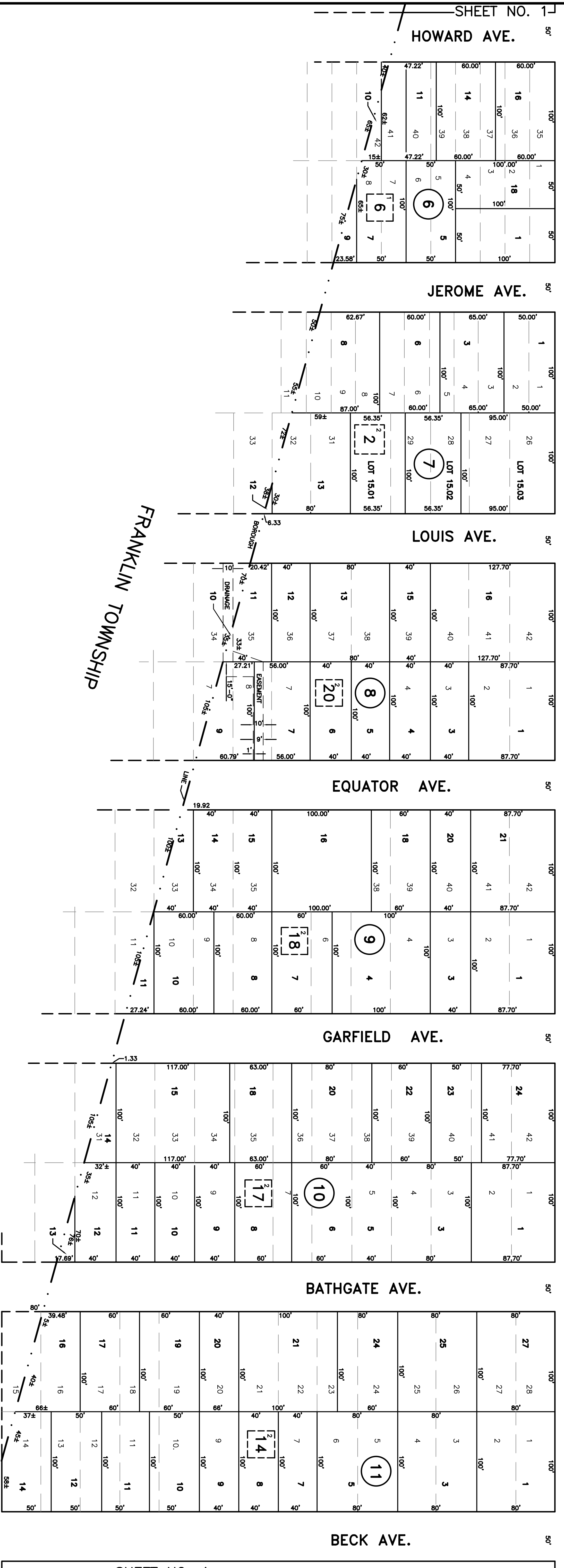


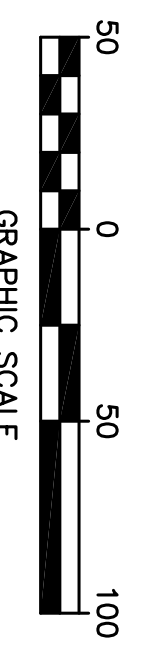
REVISIONS		
DATE	NAME	NO.
DECEMBER, 1938	NOT KNOWN	--
JUNE, 1989	HERBERT A. LAUTERWALD, JR., P.E. & L.S.	20890
SEPTEMBER, 1991	HERBERT A. LAUTERWALD, JR., P.E. & L.S.	20890
JULY 5, 1998	HERBERT A. LAUTERWALD, JR., P.E. & L.S.	20890
APRIL 30, 2006	THOMAS J. HERITS, P.E. & P.L.S.	23782
OCT. 6, 2006	THOMAS J. HERITS, P.E. & P.L.S.	23782
JANUARY 9, 2007	THOMAS J. HERITS, P.E. & P.L.S.	23782

SHEET NO. 3

SHEET NO. 5



1-Mableton Park  
2-Bound Brook Park



THIS TAX MAP SHEET IS A SCAN OF THE ORIGINAL MAP SHEET PREPARED BY C.J. KUPPER, C.E. DATED 1946 AND REVISED THROUGH JULY 1998. THE ORIGINAL TRACINGS ARE FILED IN THE OFFICE.

NEW JERSEY DEPARTMENT OF TAXATION AND FINANCE  
APPROVED AS A TAX MAP PURSUANT TO THE PROVISIONS OF CHAPTER 175, LAWS OF 1913, ETC.  
FRANK E. WALSH  
DIRECTOR, DIVISION OF TAXATION  
BY THOMAS L. FRYER  
CHIEF ENGINEER AND SUPERVISOR  
DATE: SEPT. 4, 1946 SERIAL NO.: 115

**TAX MAP**  
**BOROUGH OF**  
**SOUTH BOUND BROOK**  
**SOMERSET COUNTY, NEW JERSEY**  
SCALE 1"=50'  
**C.J. KUPPER, C.E.**  
1946  
TO SHOW CONDITIONS AS OF APRIL 2006