

SHEET NO. 5

MADISON STREET

ELIZABETH STREET

CEDAR STREET

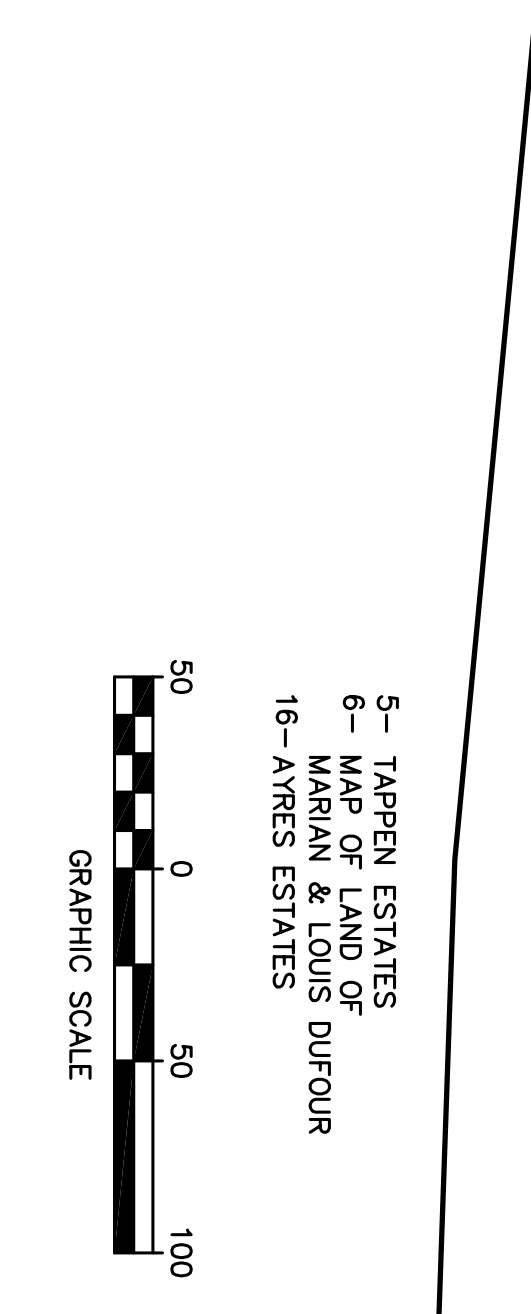
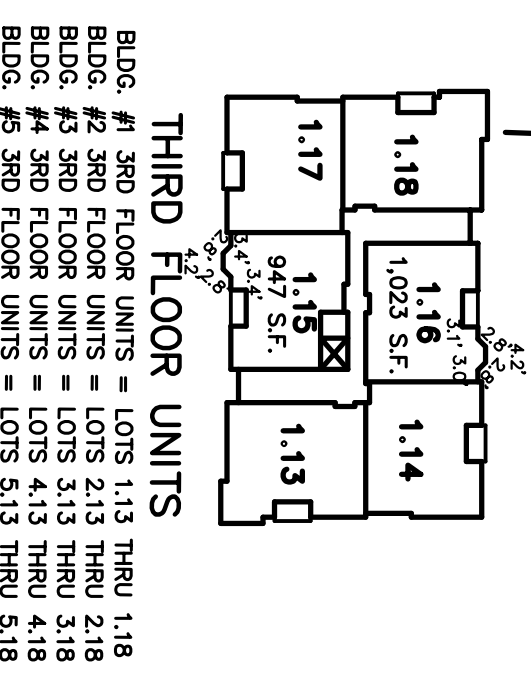
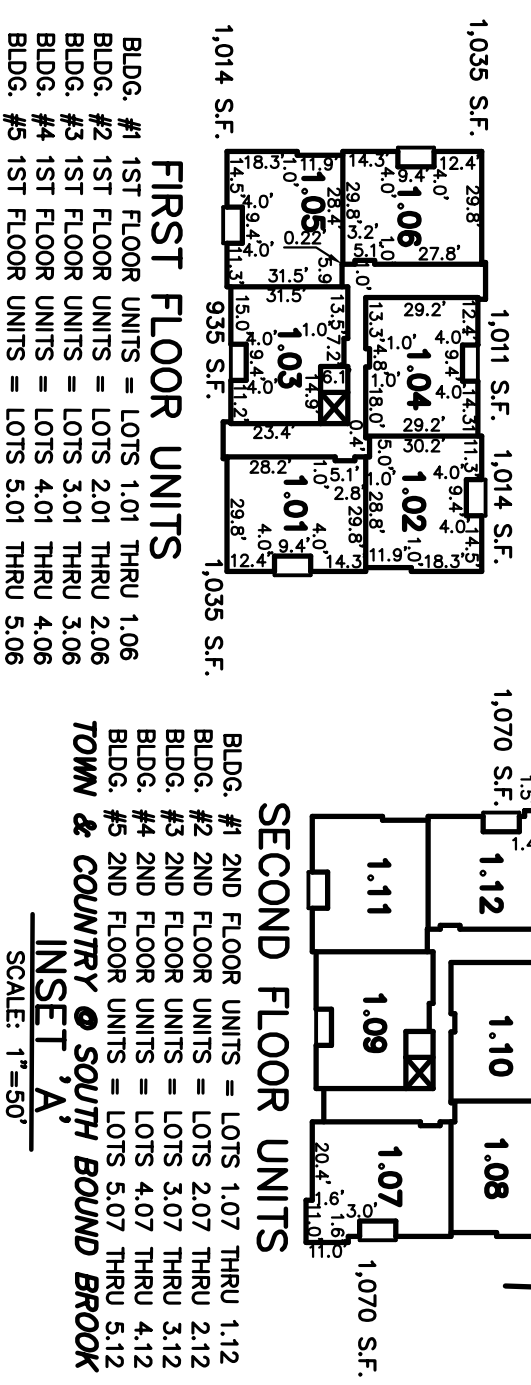
EDGEWOOD

SHEET NO. 4

TERRACE

REVISIONS

DATE	NAME	NO.
DECEMBER, 1998	NOT KNOWN	
JUNE, 1999	HERBERT A. LAUTERWALD, JR., P.E. & L.S.	20890
SEPTEMBER, 1991	HERBERT A. LAUTERWALD, JR., P.E. & L.S.	20890
APRIL 30, 2006	THOMAS J. HERITS, P.E. & P.L.S.	23782
OCT. 6, 2006	THOMAS J. HERITS, P.E. & P.L.S.	23782
JUNE 15, 2007	THOMAS J. HERITS, P.E. & P.L.S.	23782
FEB. 14, 2008	THOMAS J. HERITS, P.E. & P.L.S.	23782



5- TAPPEN ESTATES
 6- MAP OF LAND OF
 MARRAN & LOUIS DUFOUR
 16- AVRES ESTATES

NEW JERSEY DEPARTMENT OF
 TAXATION AND FINANCE
 APPROVED AS A TAX MAP PURSUANT TO THE
 PROVISIONS OF CHAPTER 175, LAWS OF
 1913, ETC.
 DIRECTOR, DIVISION OF TAXATION
 BY THOMAS L. FRYER
 CHIEF ENGINEER AND SUPERVISOR
 DATE: SEPT. 4, 1946 SERIAL NO. 115

TAX MAP
BOROUGH OF
SOUTH BOUND BROOK
SOMERSET COUNTY, NEW JERSEY
 SCALE 1"=50'
C.J. KUPPER, C.E.
 1946

THIS TAX MAP SHEET IS A
 SCANNED COPY OF
 THE MAP PREPARED BY
 C.J. KUPPER, C.E.,
 DATED 1946 AND REVISED
 THROUGH JULY 1998.
 THE ORIGINAL TRACINGS
 ARE FILED IN
 THE ENGINEERS'
 OFFICE.

SHEET NO. 13

JEFFERSON STREET

NOBLE STREET

BOARD OF EDUCATION
EXEMPTED
2.5 ACRES

ZIMMERMAN PLACE

BOROUGH PARK
EXEMPTED
4.44 AC.

BLOCK LIMIT

33

34

35

