

SEE SHEET NO. 9

ELM ST.

CLINTON STREET

MAIN STREET

W. PROSPECT STREET

MADISON ST.

PROSPECT STREET

ELIZABETH STREET

PROSPECT STREET

COTTAGE PLACE

BELL STREET

CEDAR STREET

SEE SHEET NO. 13

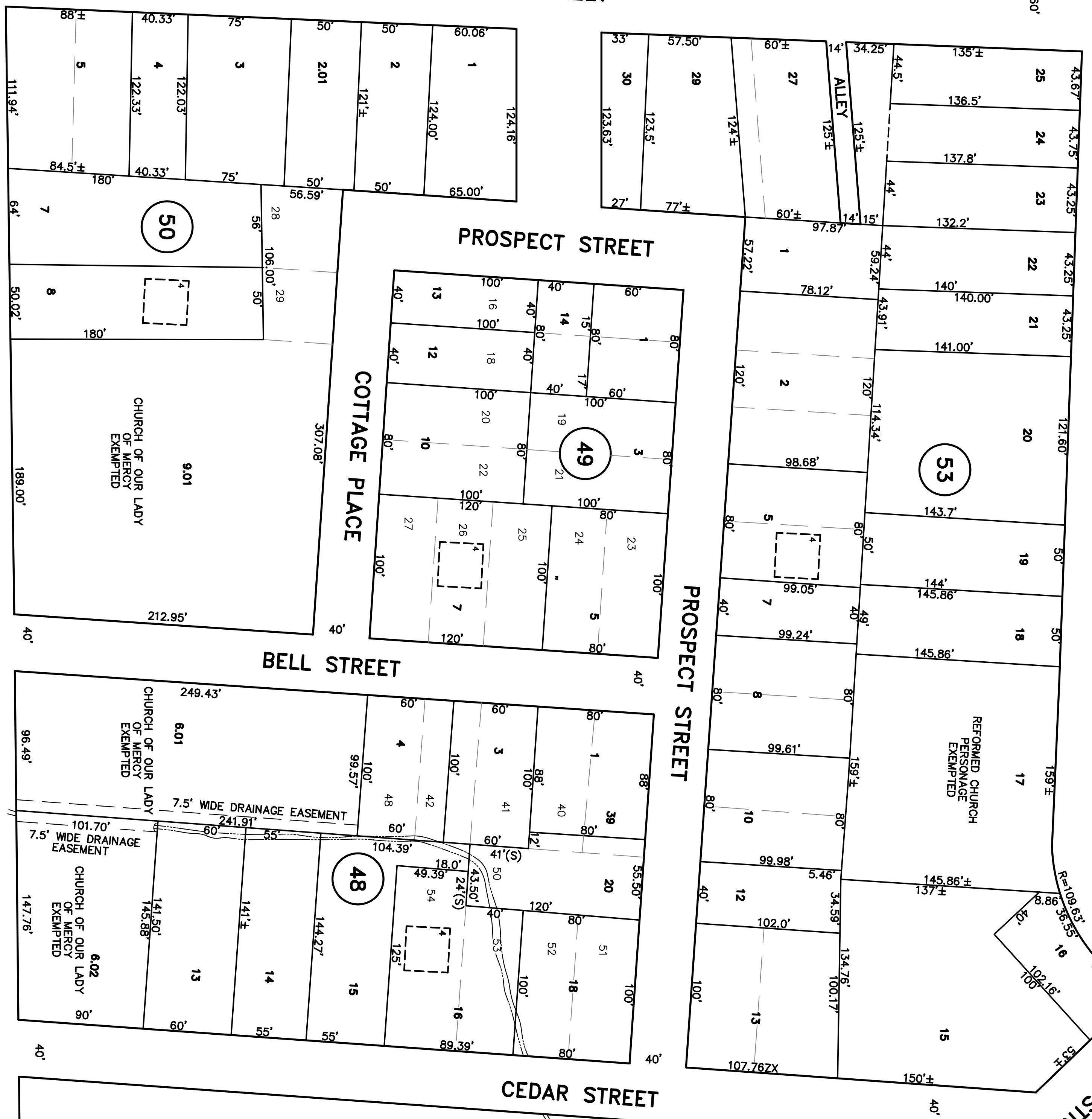
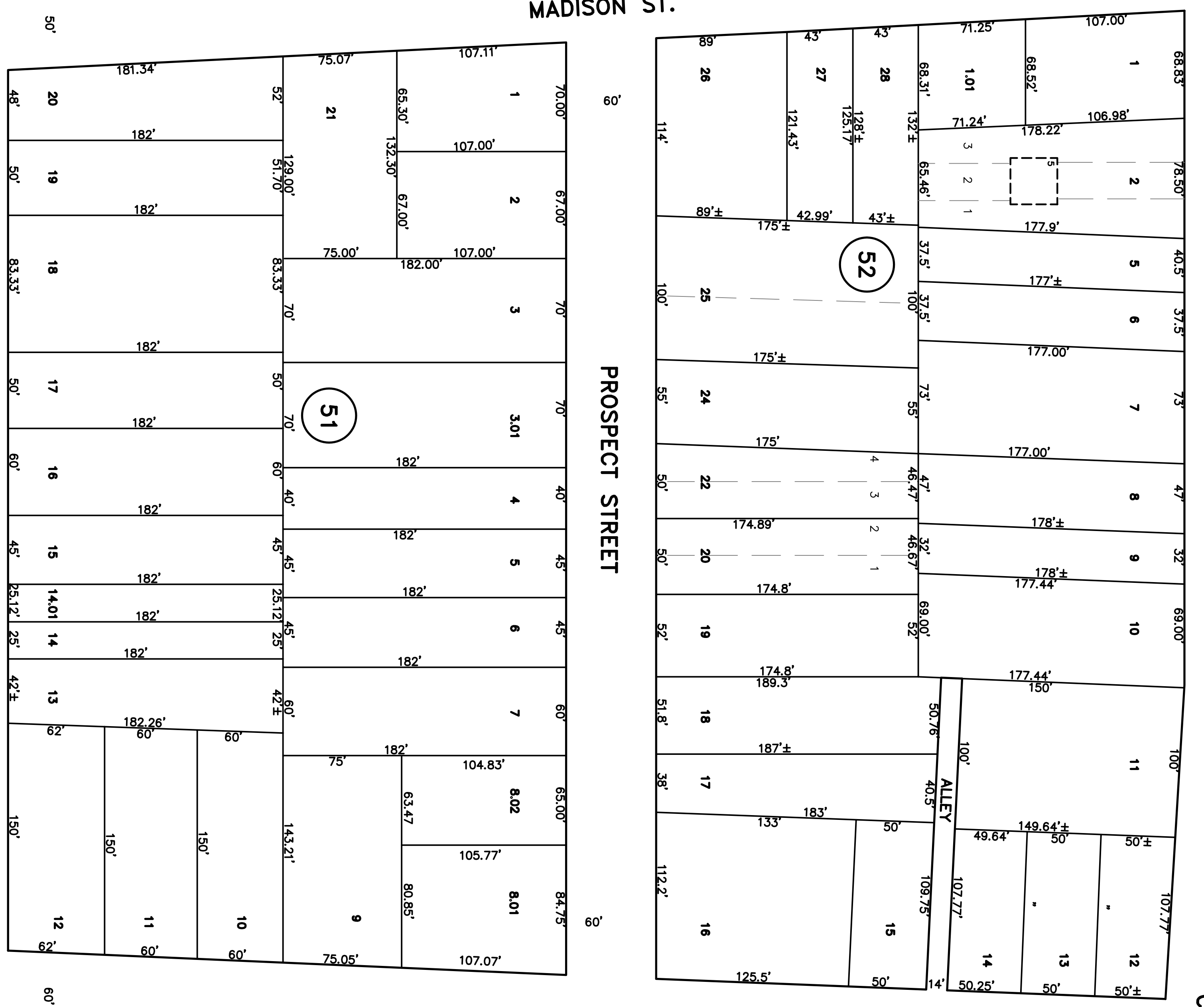
SEE SHEET NO. 5

SEE SHEET NO. 6

NASSAU STREET

HIGH STREET

SEE SHEET NO. 7

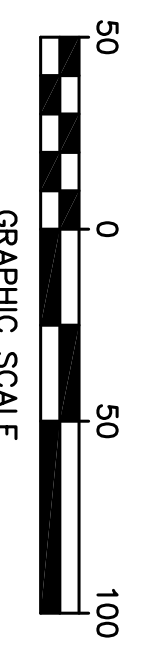


REVISIONS

DATE	NAME	NO.
DECEMBER, 1998	NOT KNOWN	---
JUNE, 1999	HERBERT A. LAUTERWALD, JR., P.E. & L.S.	20890
SEPTEMBER, 1991	HERBERT A. LAUTERWALD, JR., P.E. & L.S.	20890
JULY 5, 1998	HERBERT A. LAUTERWALD, JR., P.E. & L.S.	20890
APRIL 30, 2006	THOMAS J. HERITS, P.E. & P.L.S.	23782
OCT. 6, 2006	THOMAS J. HERITS, P.E. & P.L.S.	23782

4- BOUND BROOK TERRACE  
5- TAPPEN ESTATES

THIS TAX MAP SHEET IS A SCANNED COPY OF THE MAP PREPARED BY C.J. KUPPER, C.E., DATED 1946 AND REVISED THROUGH JULY 1998. THE ORIGINAL TRACINGS ARE FILED IN THE ENGINEER'S OFFICE.



TAX MAP

BOROUGH OF SOUTH BOUND BROOK  
SOMERSET COUNTY, NEW JERSEY  
SCALE 1"=50'  
C.J. KUPPER, C.E.  
1946

NEW JERSEY DEPARTMENT OF TAXATION AND FINANCE  
APPROVED AS A TAX MAP PURSUANT TO THE PROVISIONS OF CHAPTER 175, LAWS OF 1913, ETC.  
FRANK E. WALSH  
DIRECTOR, DIVISION OF TAXATION  
BY THOMAS L. FRYER  
CHIEF ENGINEER AND SUPERVISOR  
DATE: SEPT. 4, 1946 SERIAL NO.: 115

TO SHOW CONDITIONS AS OF APRIL 2006