



Somerset County Department of Health Public Health Emergency Preparedness Situation Update Coronavirus COVID-19 Update #14

Namitha Reddy, Director / Health Officer
nreddy@co.somerset.nj.us
908-231-7155

The Somerset County Department of Health is the lead county agency to coordinate public health disease response in emergencies, in partnership with the New Jersey Department of Health, the Centers for Disease Control and Prevention (CDC), local hospitals, medical providers, emergency medical services and other local health partners.

Somerset County, New Jersey	
Event Name	COVID-19 – Somerset County Department of Health (SCDOH) Response
Date	May 8, 2020
Time	2:00pm
Next Update	Weekly or as needed
Situation Update No.	14



Want to know what's new? Look for the highlighted sections.

What is the Current Situation?

- The Somerset County Department of Health is actively responding to the coronavirus pandemic.
- As of May 8, 2020 -
 - CDC is reporting a total of 1,219,066 cases of COVID-19 in the US, and a total of 73,297 deaths.
 - NJDOH is reporting a total of 135,454 cases and 8,952 deaths.
 - Somerset County has a total of 3,487 cases and 322 deaths. Residents can call 908-231-7111 for an automated reading of the current coronavirus (COVID-19) case count in Somerset County, NJ. Visit our website for information via our dashboard: www.co.somerset.nj.us/health.



Where can I get tested?

- Contact your healthcare provider for guidance pertaining to your individual health symptoms.
- Individuals with no exposure to COVID-19 and are not experiencing symptoms, will not be tested.
- Somerset County Department of Health & Hunterdon County Department of Health opened a joint COVID-19 test site for Somerset and Hunterdon residents on April 16. Upcoming dates for testing at this site are Tuesday, May 12 and Thursday, May 14 from 10am – 1pm at Raritan Valley Community College, 118 Lamington Road, Branchburg. Residents must have a prescription from a health care provider, and can register for an appointment at: <https://somerset-hunterdon.adlabscovidtest.com>, or visit www.co.somerset.nj.us/covid19status for a link to the registration site. Residents without computer access can call the test site hotline at: 908-237-7150.
- Instructions for individuals who test positive for COVID-19: https://www.nj.gov/health/cd/documents/topics/NCOV/COVID_Instructions_Persons_Who_Test_Positive.pdf
- Instructions for individuals who test negative for COVID-19: https://www.nj.gov/health/cd/documents/topics/NCOV/COVID_Instructions_Persons_Who_Test_Negative.pdf

- For information on testing centers in New Jersey, visit: <https://covid19.nj.gov/faqs/nj-information/testing-information/where-are-testing-centers-in-new-jersey>.
- Resources for individuals who are undocumented or uninsured can be found here: https://www.nj.gov/health/cd/documents/topics/NCOV/COVID-19_Resources_forUndocumented_and_UninsuredFactsheet.pdf

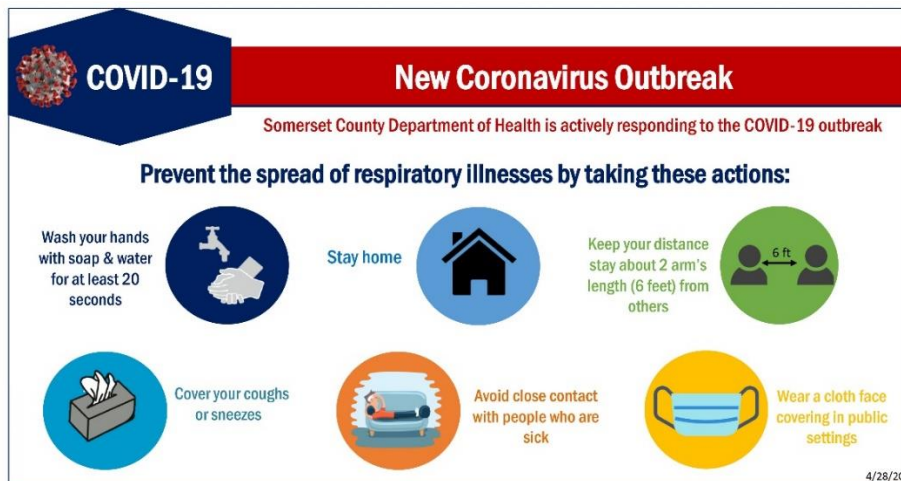
What are the current closures in NJ? What is being reopened in NJ?

What are the Closures in NJ?		What is being reopened in NJ?	
March 16	<ul style="list-style-type: none"> • Public & private preschool, elementary & secondary schools, & institutions of higher education to close beginning on March 18. • Casinos, racetracks, theaters, gyms, non-essential retail, recreational, & entertainment businesses after 8:00 PM • Banned gatherings of 50+ • All bars and restaurants are closed for eat-in services, these establishments may open for takeout & delivery services ONLY, until further notice. • Campground, visitor centers, nature centers, restrooms & similar facilities at state parks, forests, recreational areas, Wildlife Management Areas & historic sites are closed until further notice. • All non-essential & non-emergency travel in New Jersey is strongly discouraged between the hours of 8:00 PM AND 5:00 AM. 	April 29	<p>To go into effect at sunrise on Saturday, May 2nd</p> <ul style="list-style-type: none"> • Reopen state parks and golf courses • Restores authority of county governments to open or close county parks
March 17	<ul style="list-style-type: none"> • All indoor portions of retail shopping malls & all indoor & outdoor places of public amusement in NJ 		
March 19	<ul style="list-style-type: none"> • Personal care businesses & social clubs including: barber shops, hair salons, spas, nail & eyelash salons, tattoo parlors 		
March 21	<ul style="list-style-type: none"> • Statewide stay at home order & closure of all non-essential retail businesses 		
March 23	<ul style="list-style-type: none"> • Suspension of all elective surgeries & invasive procedures performed on adults that are scheduled to take place after 5:00 p.m. on Friday, March 27 		
April 7	<ul style="list-style-type: none"> • Closure of all state parks & forests & county parks to further social distancing 		
April 8	<ul style="list-style-type: none"> • Cease all Non-Essential Construction Projects & Imposes Additional Mitigation Requirements on Essential Retail Businesses & Industries to Limit the Spread of COVID-19 		
May 4	<ul style="list-style-type: none"> • Statewide school closures will be extended through the end of the 2019-2020 academic year. Private schools will remain closed until at least June 30. 		

Somerset County facilities are closed to the public until further notice. For county service updates, visit: <https://www.co.somerset.nj.us/residents/situation-report>.

How Can I Protect Myself from the New Coronavirus?

The CDC always recommends everyday preventive actions to help prevent the spread of respiratory viruses. To protect yourself, you should:



→ For more information: <https://www.co.somerset.nj.us/government/public-health-safety/health-department/services/disease-prevention/covid-19-health-education>



What does Law Enforcement Need to Know?

- Law enforcement personnel should follow CDC guidance to protect yourself from exposure: <https://www.cdc.gov/coronavirus/2019-ncov/community/guidance-law-enforcement.html>.



What do Hospitals and Medical Laboratories Need to Know?

- Information regarding recommendations for reporting, testing, specimen collection, interim healthcare infection prevention, and control recommendations for patients under investigation for COVID-19, can be obtained from CDC at <https://www.cdc.gov/coronavirus/2019-nCoV/lab/index.html> and <https://www.cdc.gov/coronavirus/2019-nCoV/hcp/index.html>.
- COVID Antibody/Serological Test letter to healthcare providers: https://www.nj.gov/health/cd/documents/topics/NCOV/COVID_SerologyLetter_PHEL.pdf
- Strategies for Optimizing the Supply of PPE: <https://www.cdc.gov/coronavirus/2019-ncov/hcp/ppe-strategy/index.html>
- Governor Murphy's Administration directed commercial laboratories to report all COVID-19 test results to the NJDOH. As testing expands, it is vital that the State has access to the most accurate and up-to-date COVID-19 test results. Governor Murphy signed legislation (S2357) on April 22, 2020 which will require hospitals to report demographic data to the New Jersey Department of Health.



What do Veterinarians Need to Know?

- Information for veterinary clinical settings to facilitate preparedness and ensure practices are in place to help people and animals stay safe and healthy can be obtained from CDC at <https://www.cdc.gov/coronavirus/2019-ncov/community/veterinarians.html>



What do Healthcare Professionals Need to Know?

- Report any at risk-patients and their clinical status to the local health department where the patient resides. Public distribution list for Somerset County health departments visit: <https://www.co.somerset.nj.us/home/showdocument?id=35658>
- Patients should be evaluated, and the public health department contacted on a case-by-case basis if clinical presentation or exposure history is equivocal (e.g., uncertain travel or exposure).
- COVID Antibody/Serological Test letter to healthcare providers: https://www.nj.gov/health/cd/documents/topics/NCOV/COVID_SerologyLetter_PHEL.pdf
- Strategies for Optimizing the Supply of PPE: <https://www.cdc.gov/coronavirus/2019-ncov/hcp/ppe-strategy/index.html>
- If you work in a healthcare facility and are running low on personal protective equipment (PPE), contact your county Office of Emergency Management to request PPE.
- If patient meets the criteria place facemask on patient, and isolate in a private room or a separate area.
- ➔ For more information: <https://www.cdc.gov/coronavirus/2019-nCoV/hcp/index.html>
- ➔ https://www.nj.gov/health/cd/topics/covid2019_healthcare.shtml



What do Schools Need to Know?

- On May 4, 2020, Governor Murphy announced that statewide school closures will be extended through the end of the 2019-2020 school year. Private schools with longer academic years will remain closed until at least June 30.
- ➔ For more information: https://www.nj.gov/health/cd/topics/covid2019_schoolbusiness.shtml



What do Faith-Based Communities Need to Know?

- Faith-based organizations should follow CDC guidance to help plan, prepare and respond to this emerging public health threat: <https://www.cdc.gov/coronavirus/2019-ncov/community/organizations/guidance-community-faith-organizations.html>
- Social distancing means that you should not be in any large gatherings or groups. Be around as few people as possible. You should stay 2 arm’s length from each other.
- When leaving home, to prevent further spread of coronavirus, the Centers for Disease Control and Prevention (CDC) recommends wearing homemade or cloth face coverings called courtesy masks. Although wearing these masks are important for reducing the spread of COVID-19, people must still practice social distancing and adhere to stay-at-home orders. For more information about how to make and wear masks properly, visit: www.co.somerset.nj.us/health.
- Information for your congregation and bulletins can be found at: www.co.somerset.nj.us/health.

What are the Recommendations for Travelers?



Due to the evolving situation, please check CDC’s Travel Health page for COVID-19 for the most current national/international recommendations: <https://www.cdc.gov/coronavirus/2019-ncov/travelers/index.html>.



What do Businesses Need to Know?

- Review your emergency plans for your company or business.
- The following interim guidance from CDC may help prevent workplace exposures to acute respiratory illnesses, including COVID-19, in non-healthcare settings.
- The Somerset County Office of Emergency Management is continuing to accept donations of personal protective equipment. For more information, visit: <https://www.co.somerset.nj.us/government/public-health-safety/emergency-management>.
- Cleaning and Disinfecting Your Facility: Everyday Steps, Steps When Someone is Sick, and Considerations for Employers, visit: https://www.cdc.gov/coronavirus/2019-ncov/prepare/disinfecting-building-facility.html?deliveryName=USCDC_2067-DM24835
- CDC's Reopening Guidance for Cleaning and Disinfecting Public Spaces, Workplaces, Businesses, Schools, and Homes: <https://www.cdc.gov/coronavirus/2019-ncov/community/reopen-guidance.html>
- Help prevent the spread of COVID: <https://www.co.somerset.nj.us/home/showdocument?id=37237>
- **On April 8, 2020, Governor Murphy signed an executive order stating** - All grocery store employees and customers are required to wear face coverings or masks, and businesses are expected to limit the number of people in locations to 50 percent of capacity. In addition, essential stores will need to put up physical barriers to protect cashiers.
- **As the lead agency for coordinating public health disease response, the SCDOH communicates with hospitals, laboratories, emergency responders, medical providers, schools, businesses and other community organizations to share information and improve response to public health emergencies. Representatives of these organizations are encouraged to sign up for notifications at:**
<http://bit.ly/SCLINCS>.
- ➔ **For more information:** https://www.cdc.gov/coronavirus/2019-ncov/specific-groups/guidance-business-response.html?CDC_AA_refVal=https%3A%2F%2Fwww.cdc.gov%2Fcoronavirus%2F2019-ncov%2Fguidance-business-response.html



Preparing Individuals and Communities

- Everyone should follow general guidelines for hand hygiene and for preventing disease, as noted in the *"How Can I Protect Myself from the New Coronavirus?"* section above.
- Monitor yourself and your family members for symptoms of COVID -19. Mildly ill patients should be encouraged to stay home and contact their healthcare provider by phone for guidance about clinical management. Patients who have severe symptoms, such as difficulty breathing, should seek care immediately. Older patients and individuals who have underlying medical conditions or are immunocompromised should contact their physician early in the course of even mild illness.
- Social distancing means that you should not be in any large gatherings or groups. Be around as few people as possible. You should stay 2 arm's length from each other.
- When leaving home, to prevent further spread of coronavirus, the Centers for Disease Control and Prevention (CDC) recommends wearing homemade or cloth face coverings called courtesy masks. Although wearing these masks are important for reducing the spread of COVID-19, people must still practice social distancing and adhere to stay-at-home orders. For more information about how to make and wear masks properly, visit: www.co.somerset.nj.us/health.
- As of April 8, all grocery store employees and customers are required to wear face coverings or masks. Exempt from this rule are children under the age of two as well as anyone who can prove a medical reason for not wearing a mask.

- It is also important that critical supplies such as medical-grade face coverings should not be worn by the general public, since these supplies must be reserved for healthcare workers and medical first responders who are treating patients.
 - Resources for individuals who are undocumented or uninsured can be found here: https://www.nj.gov/health/cd/documents/topics/NCOV/COVID-19_Resources_forUndocumented_and_UninsuredFactsheet.pdf
 - COVID-19 Spanish Resources are available here: <https://www.co.somerset.nj.us/government/public-health-safety/health-department/services/disease-prevention/covid-19-spanish-resources>
 - COVID-19 Frequently Asked Questions: https://www.nj.gov/health/cd/documents/topics/NCOV/COVID19_public_faqs.pdf
- ➔ **For more information:** <https://www.cdc.gov/coronavirus/2019-ncov/preparing-individuals-communities.html>
- ➔ https://www.nj.gov/health/cd/topics/covid2019_community.shtml

Mental Health Resources

**Feeling stressed, anxious or depressed due to COVID-19?
Mental Health support, guidance and referrals are just a call away!**



Somerset County Mental Health	1-862-308-0430 (English and <u>español</u>)
	1-908-975-9401 (English)
Mental Health Association of New Jersey	1-877-294-HELP (4357)
NJ Addictions Hotline	1-844-276-2777

- The Atlantic Health System is hosting a Coronavirus Grief and Loss support group. To register call 862-260-3199 (option 3) for an invitation. The support group is web-based and is led by Atlantic Health behavioral health clinicians and social workers.
- A free emotional support helpline is now available to deaf and hard of hearing New Jerseyans feeling the emotional and mental toll of COVID-19. New Jerseyans can call the videophone helpline at **973-870-0677** for free, confidential support. Direct communication in sign language will be offered from 9 a.m. to 5 p.m. Monday through Friday by live trained specialists.

This is an ongoing situation, so everyone should keep up-to date on the most current information by regularly visiting one of these trusted public health sources:

COVID-19 **New Coronavirus Outbreak**
Somerset County Department of Health is actively monitoring the COVID-19 outbreak.

Get the most up-to-date information on the new coronavirus from trusted sources:

- Centers for Disease Control and Prevention www.cdc.gov/
- World Health Organization www.who.int/
- New Jersey Department of Health www.nj.gov/health/
- Somerset County Department of Health www.co.somerset.nj.us/health

COVID-19 **New Coronavirus Outbreak**
Somerset County Department of Health is actively monitoring the COVID-19 outbreak.

Questions about the new Coronavirus?

Call NJ 2-1-1
1-800-962-1253

Text
NJCOVID to 898-211

Email

Residents may contact
Somerset County Department of Health
at coronavirus@co.somerset.nj.us

The NJ Poison Control Center & 211 have partnered with the New Jersey Department of Health to provide information to the public on COVID-19.

The SCDOH is taking proactive preparedness precautions by monitoring the situation, enhancing disease surveillance, working with area healthcare providers, and keeping the public informed.

The most up-to-date information will be made available on the SCDOH website at www.co.somerset.nj.us/health.

If you have questions on this guidance, please email coronavirus@co.somerset.nj.us.
